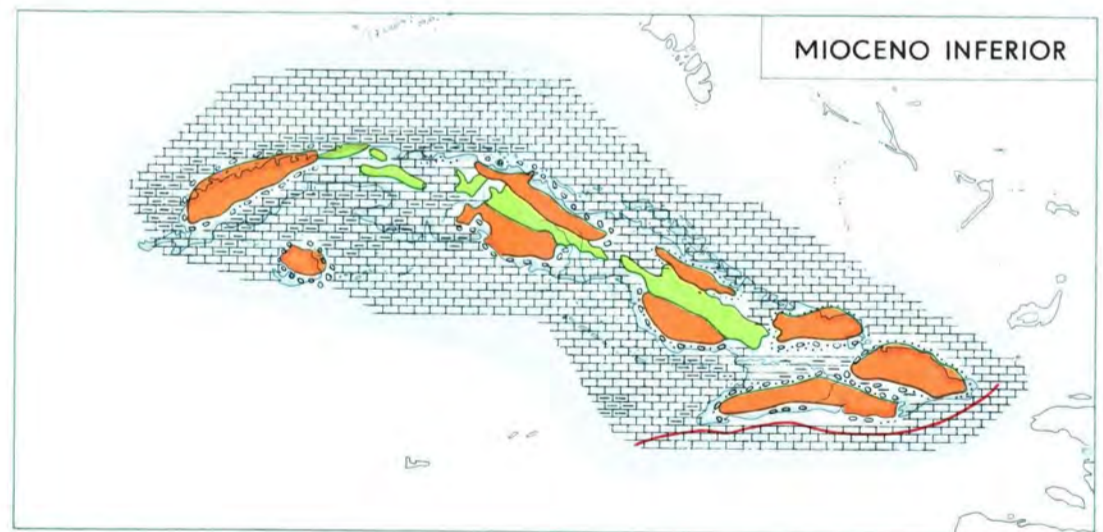
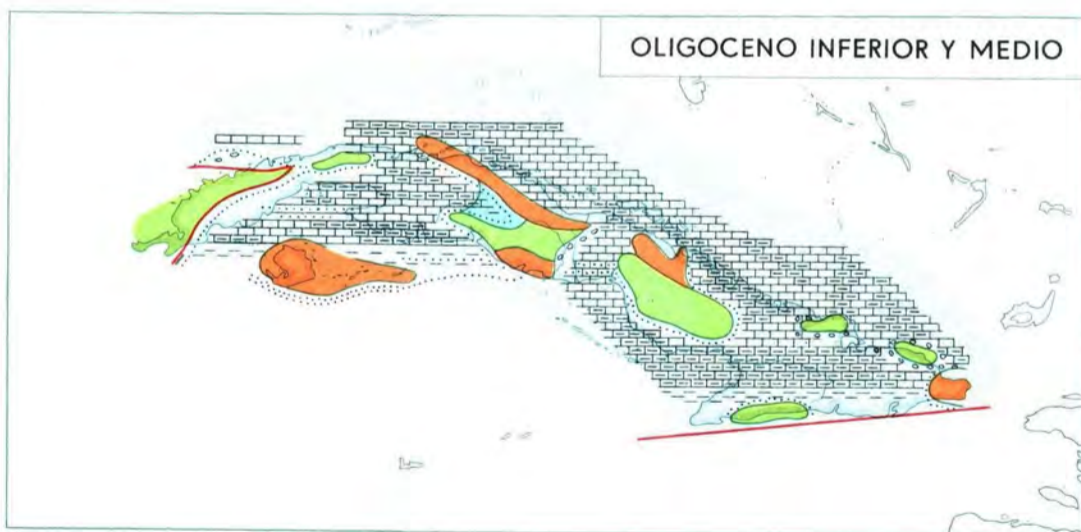
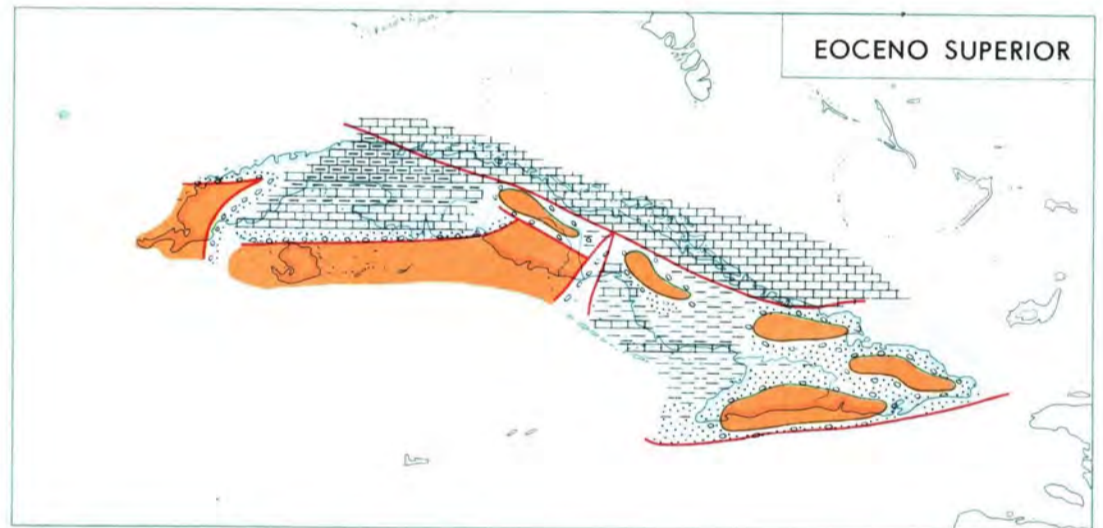
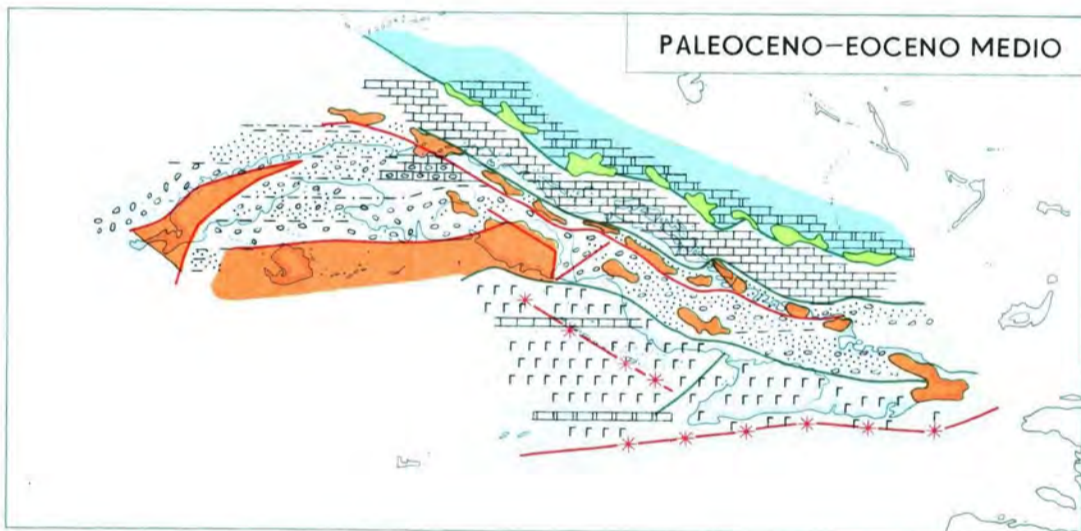
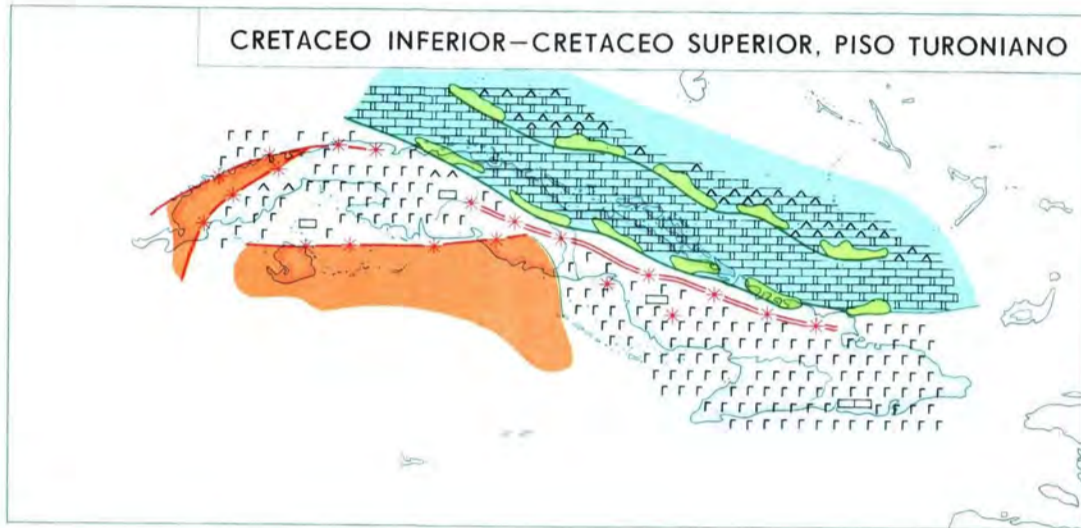
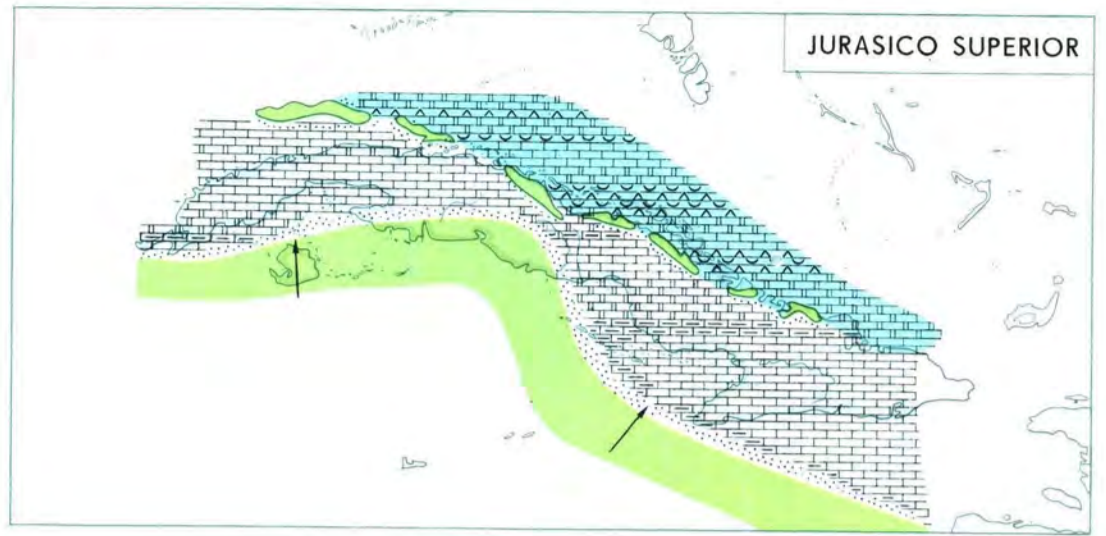
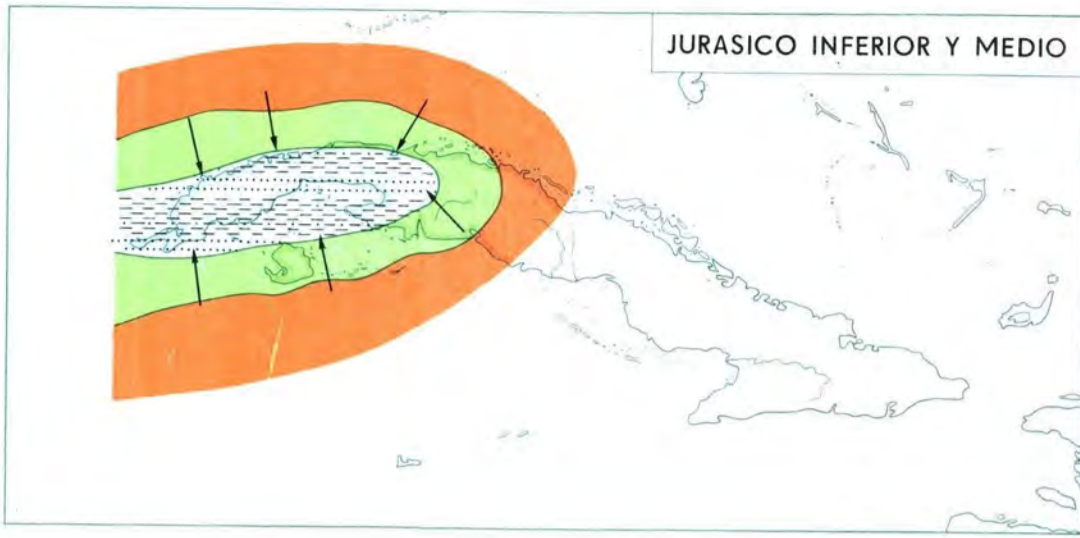


PALEOGEOGRAFIA



TIERRA FIRME

Mesetas y zonas montañosas

Llanuras

M A R

De salinidad elevada

De salinidad normal

L I T O L O G I A

Rocas efusivas básicas, medias y sus tobos

Anhidritas

Sal

Margas

Dolomitas

Calizas

Limolitas

Arcillas

Conglomerados

Areniscas

Volcanes

Zonas de fractura

Fracturas

Dirección del material acarreado por la erosión

Límites de la tierra firme

Límites de las facies

ESCALA 1:10 000 000