

Fig. 9. A. *Anastrodesmus bernardii*; B. *A. bibraianus*; C. *Chlorolobion braunii*; D. *Monoraphidium griffithii*.

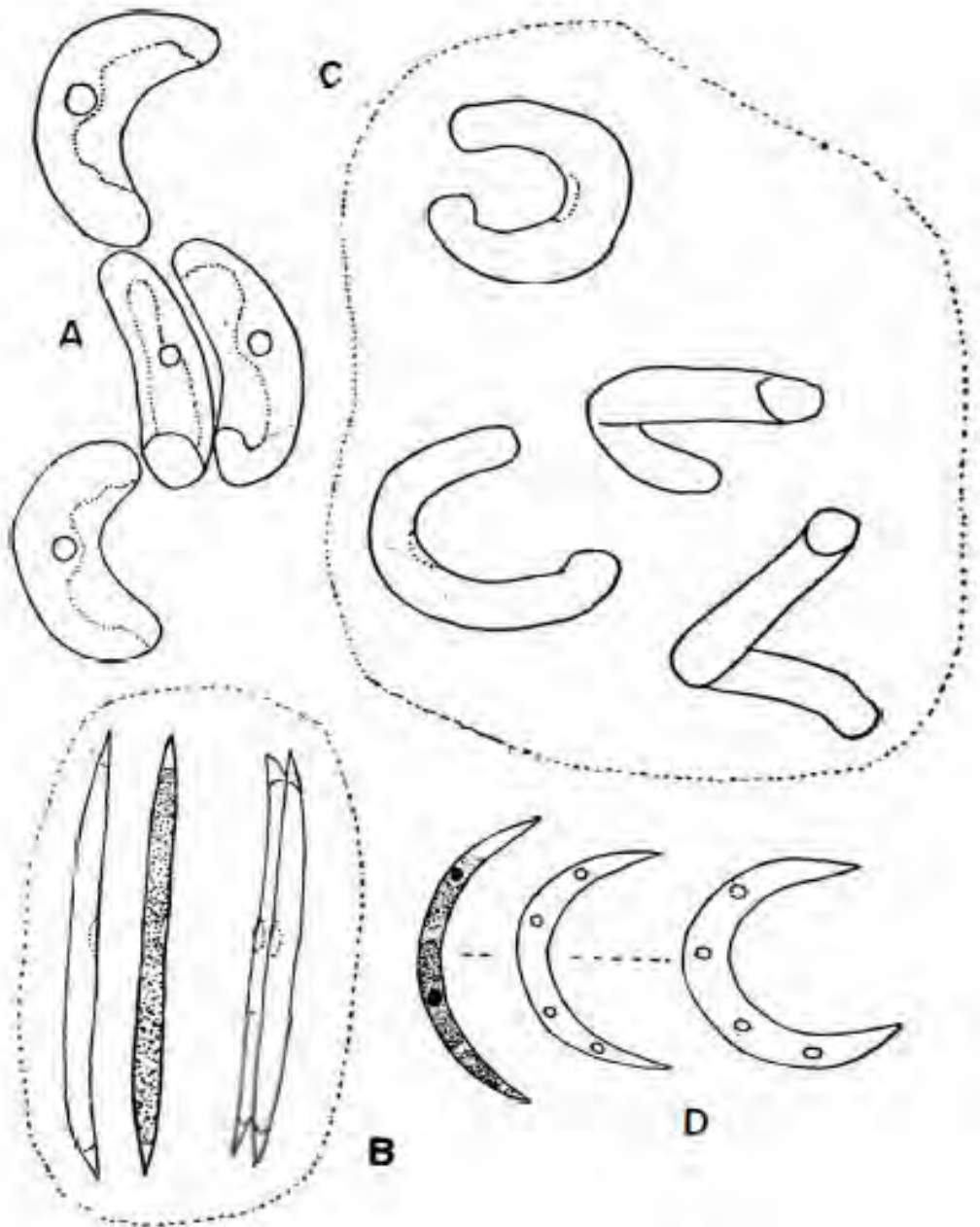


Fig. 10. A. *Tetrallantos* cf. *lagerheimii*; B. *Quadrigula closterioides*; C. *Kirchneriella contorta*; D. *Closterlopsis drepaniformis* sp. nov. (iconótipo).

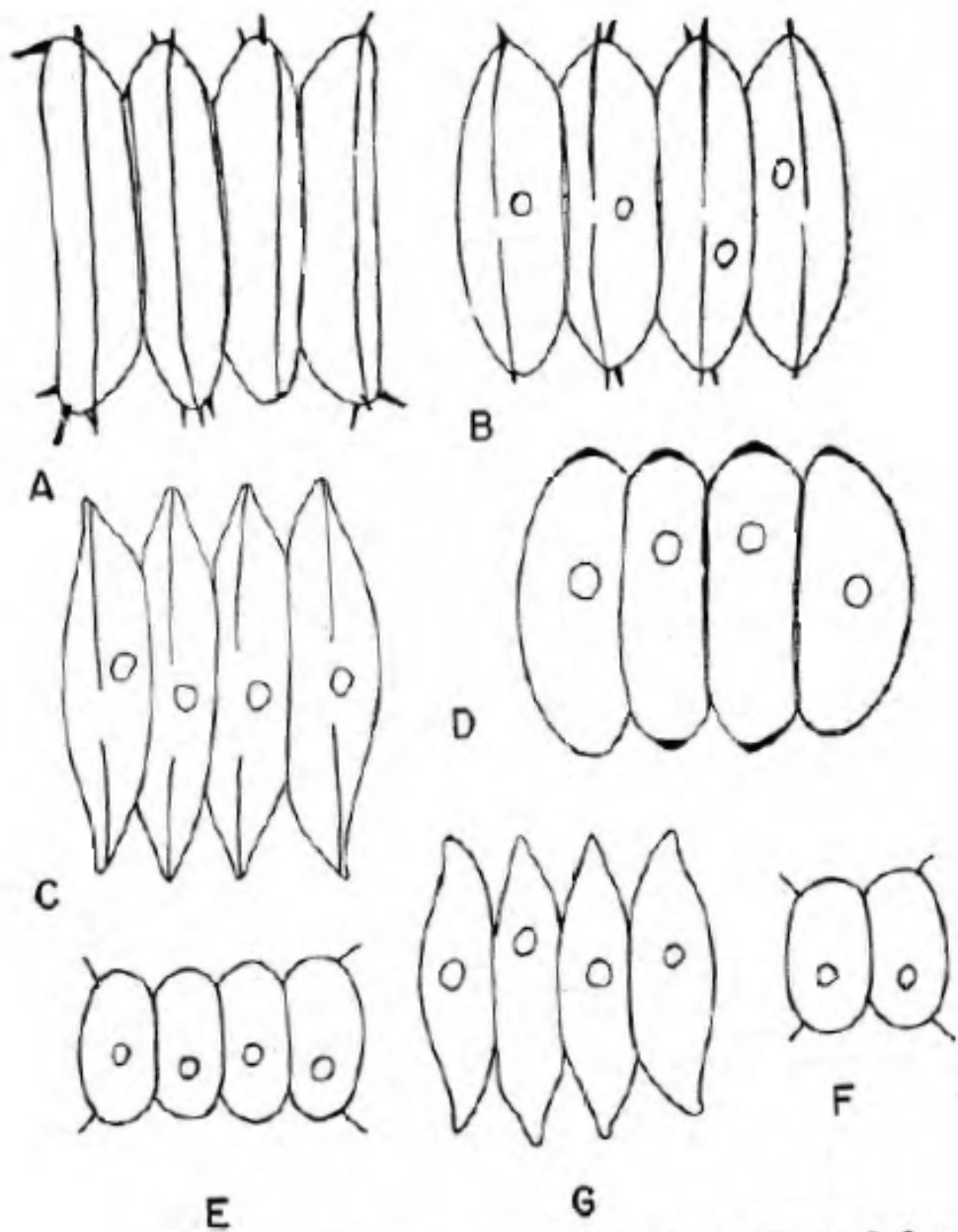


Fig. 11. A. *Scenedesmus praetervisus*; B. *S. brasiliensis*; C. *S. carlbeanus*; D. *S. acunae*; E-F. *S. microspina*; G. *S. acutus*.

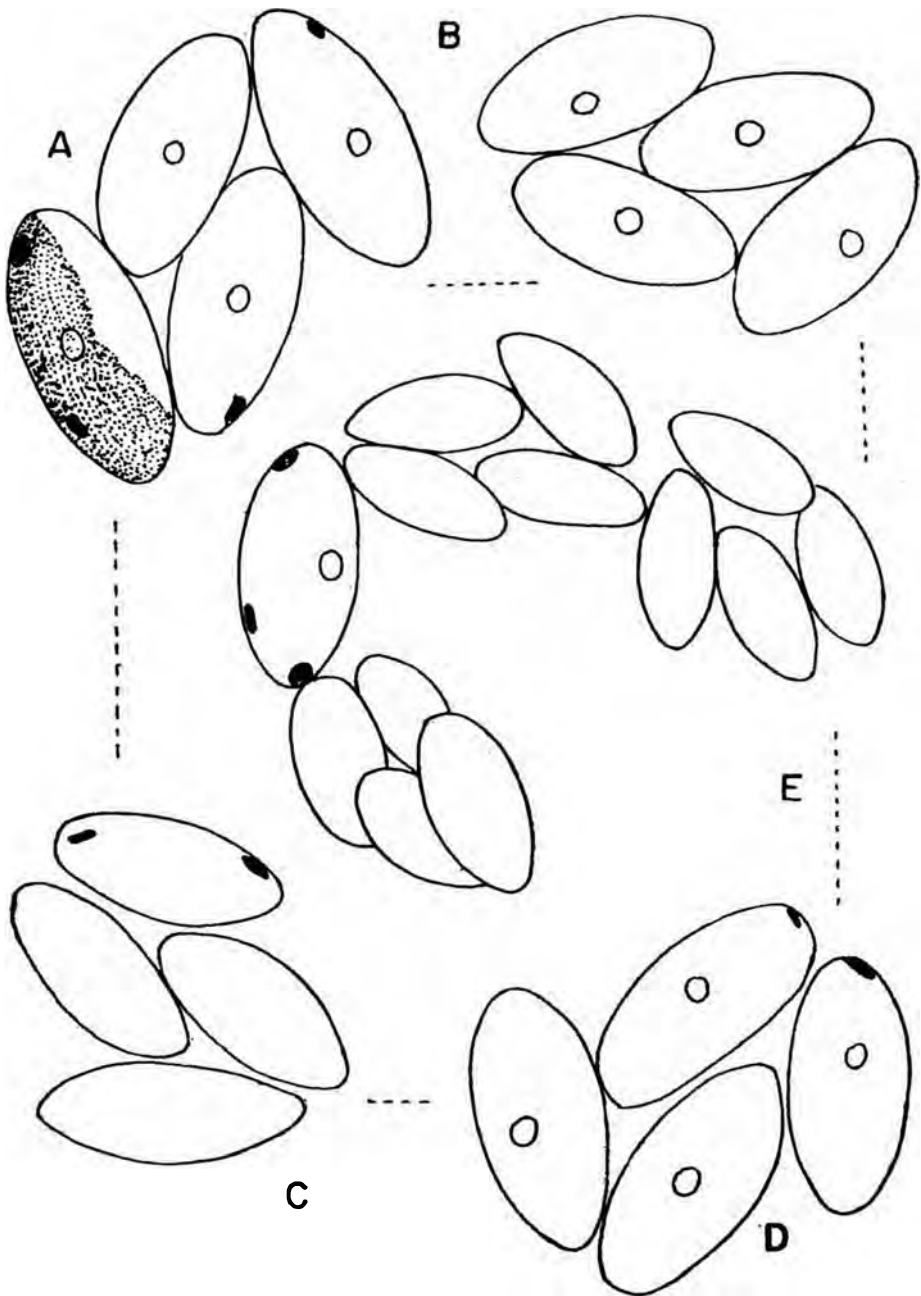


Fig. 12. A-E. *Tetrachlorella elliptica* sp. nov. (A. Iconótipo).

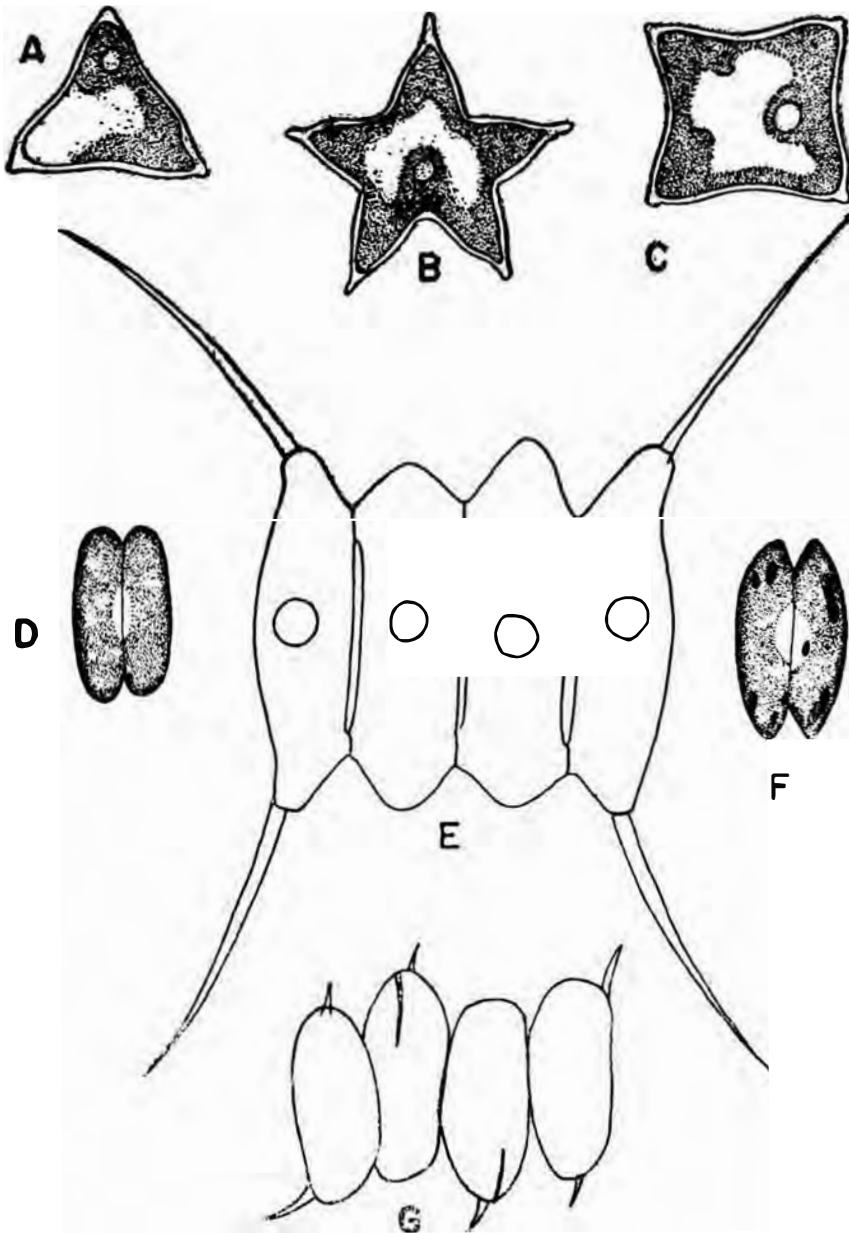


Fig. 13. A. *Tetraedron triangulare*; B. *T. caudatum*; C. *T. minimum*; D. *Didymocystis fina*; E. *Scenedesmus tropicus*; F. *Didymocystis comasil*; G. *Scenedesmus dispar*.

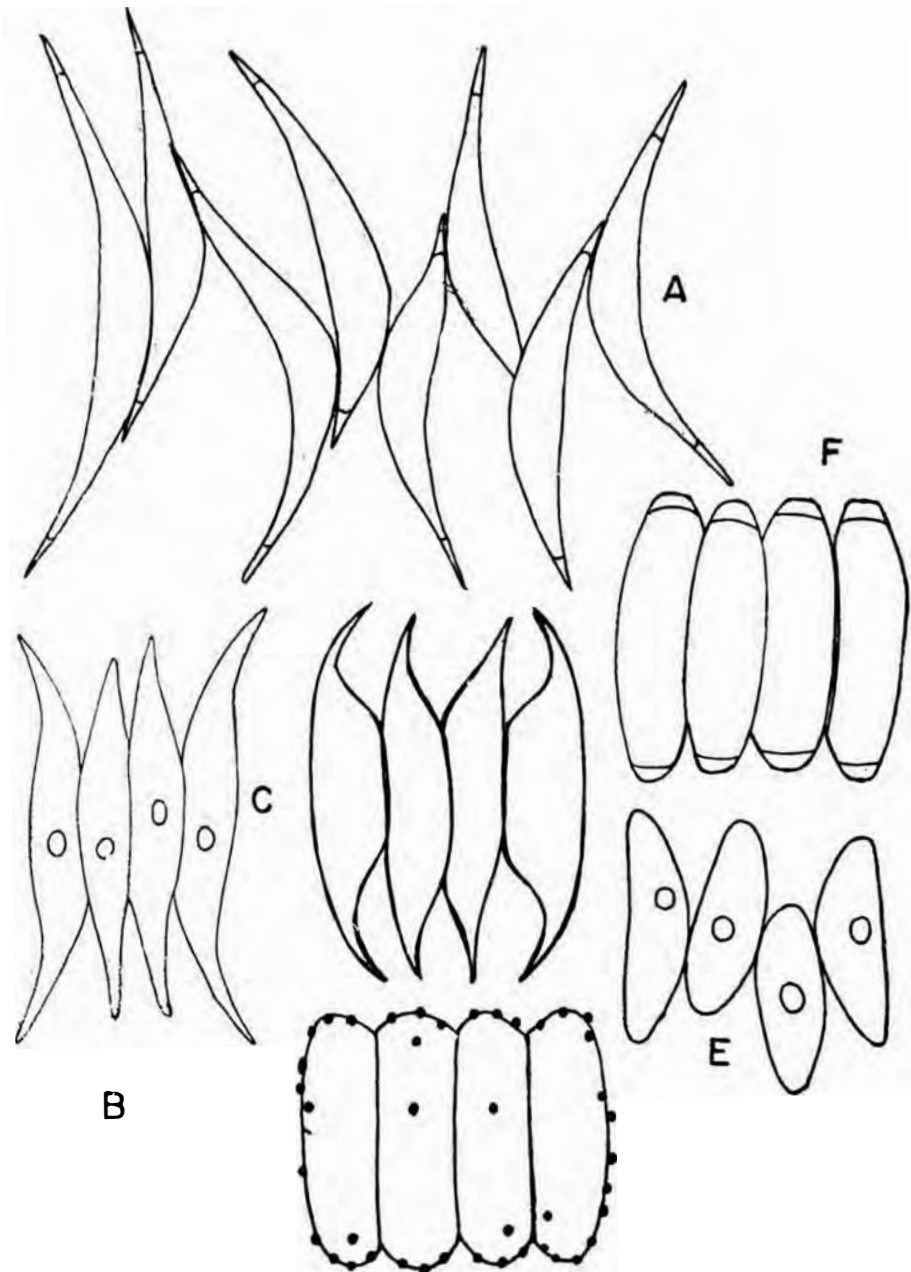


Fig. 14. A. *Scenedesmus bernardii*; B. *S. acuminatus*; C. *S. regularis*; D. *S. granulatus*; E. *S. baculiformis*; F. *S. calyptratus*.

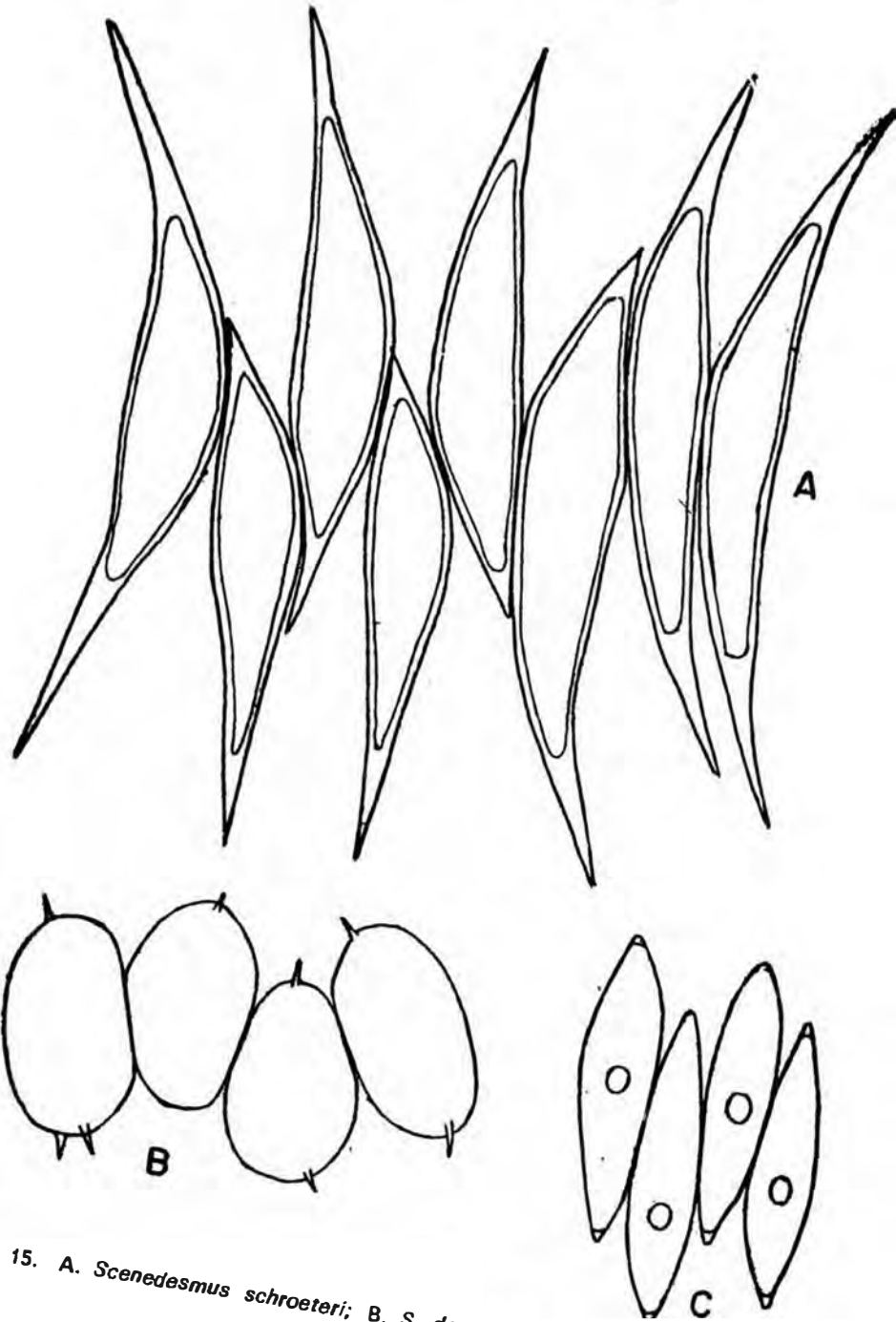


Fig. 15. A. *Scenedesmus schroeteri*; B. *S. denticulatus*; C. *S. obliquus*.

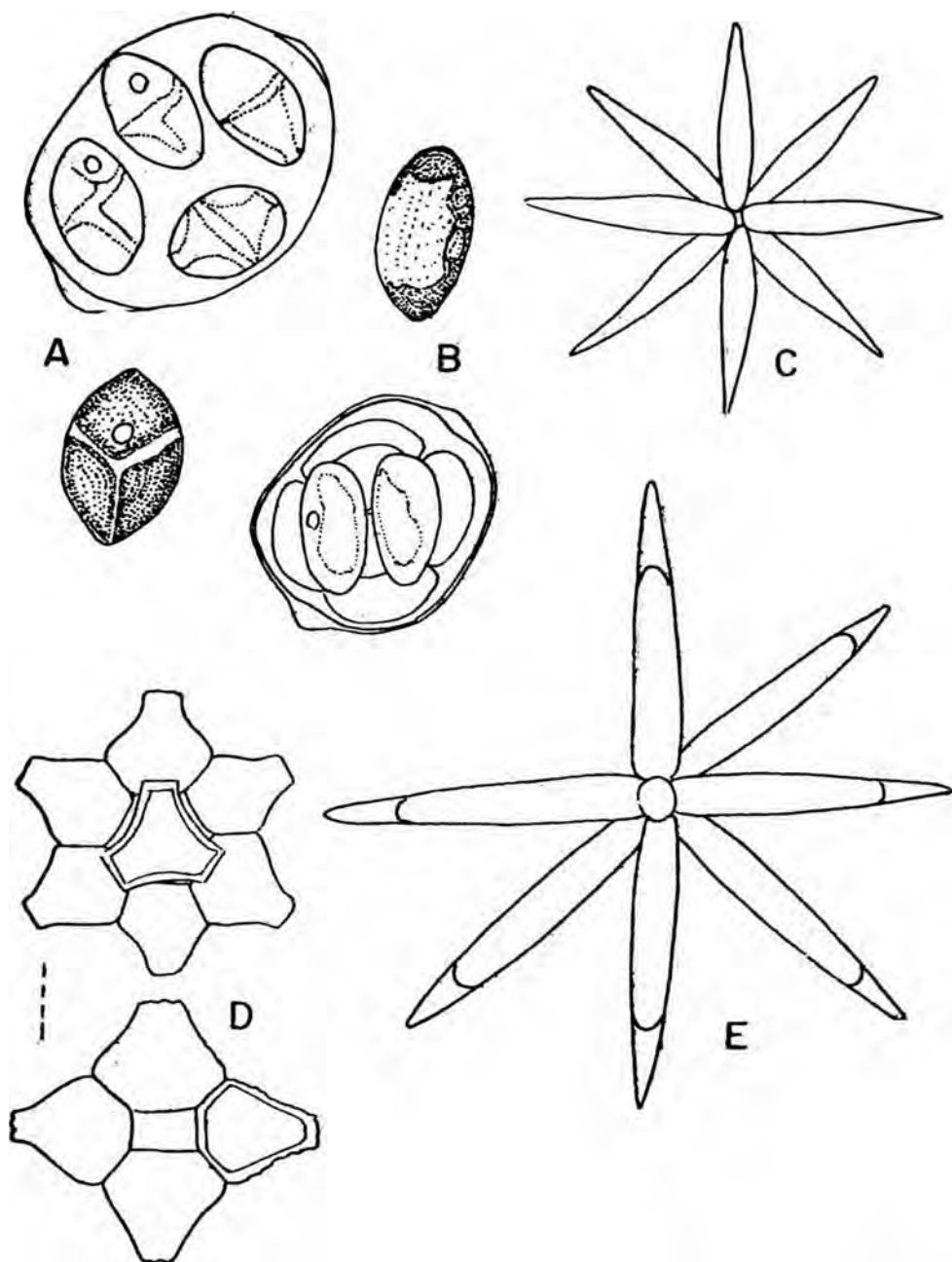


Fig. 16. A. *Oocystis* cf. *marssonii*; B. *O.* cf. *parva*; C. *Actinastrum raphidioides*; D. *Coelastrum proboscideum*; E. *Actinastrum hantzschii*.



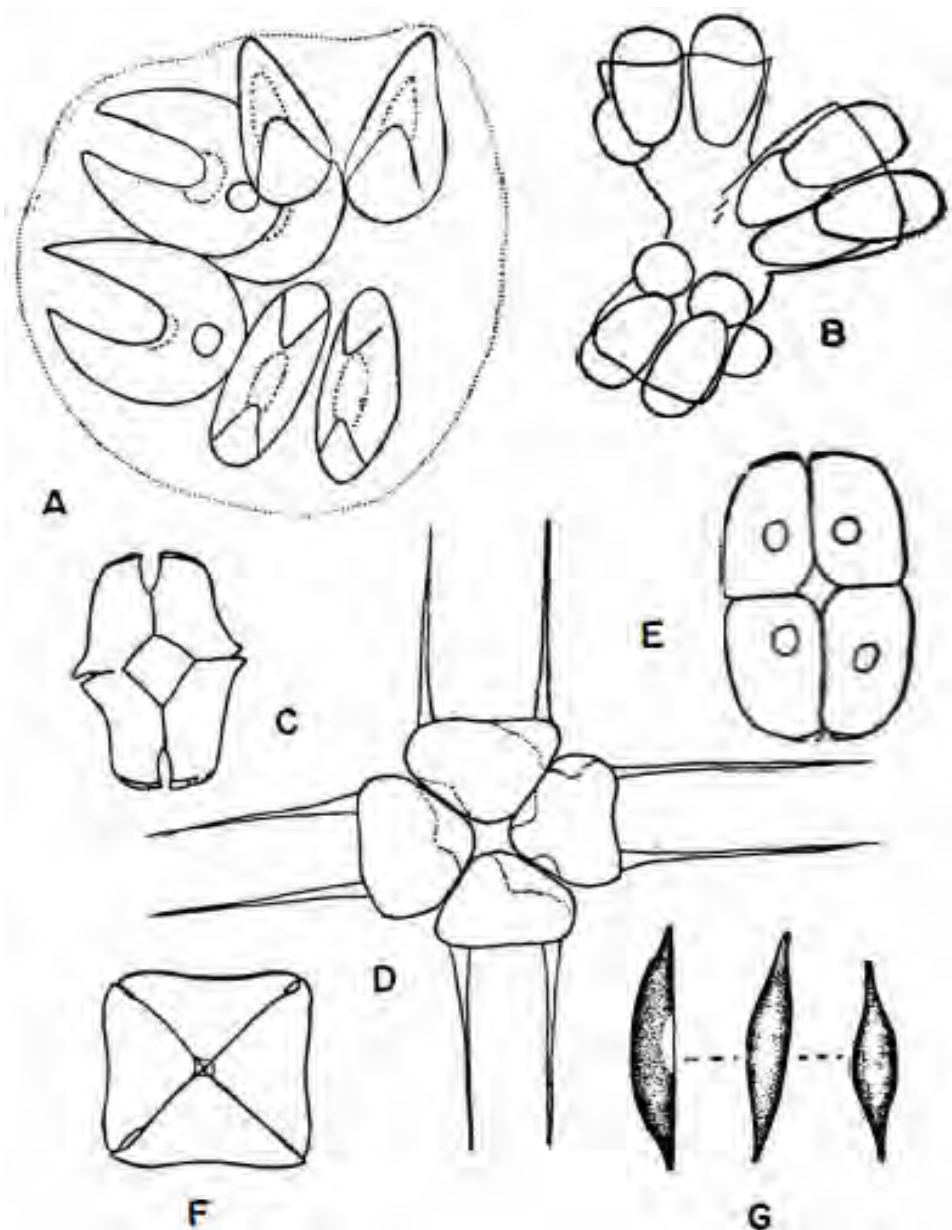


Fig. 17. A. *Kirchneriella diana*; B. *Botryococcus* sp.; C. *Crucigeniella pulchra*; D. *Tetrastrum homoiacanthum*; E. *Crucigeniella apiculata*; F. *Crucigenia tetrapedia*; G. *Monoraphidium pusillum*.

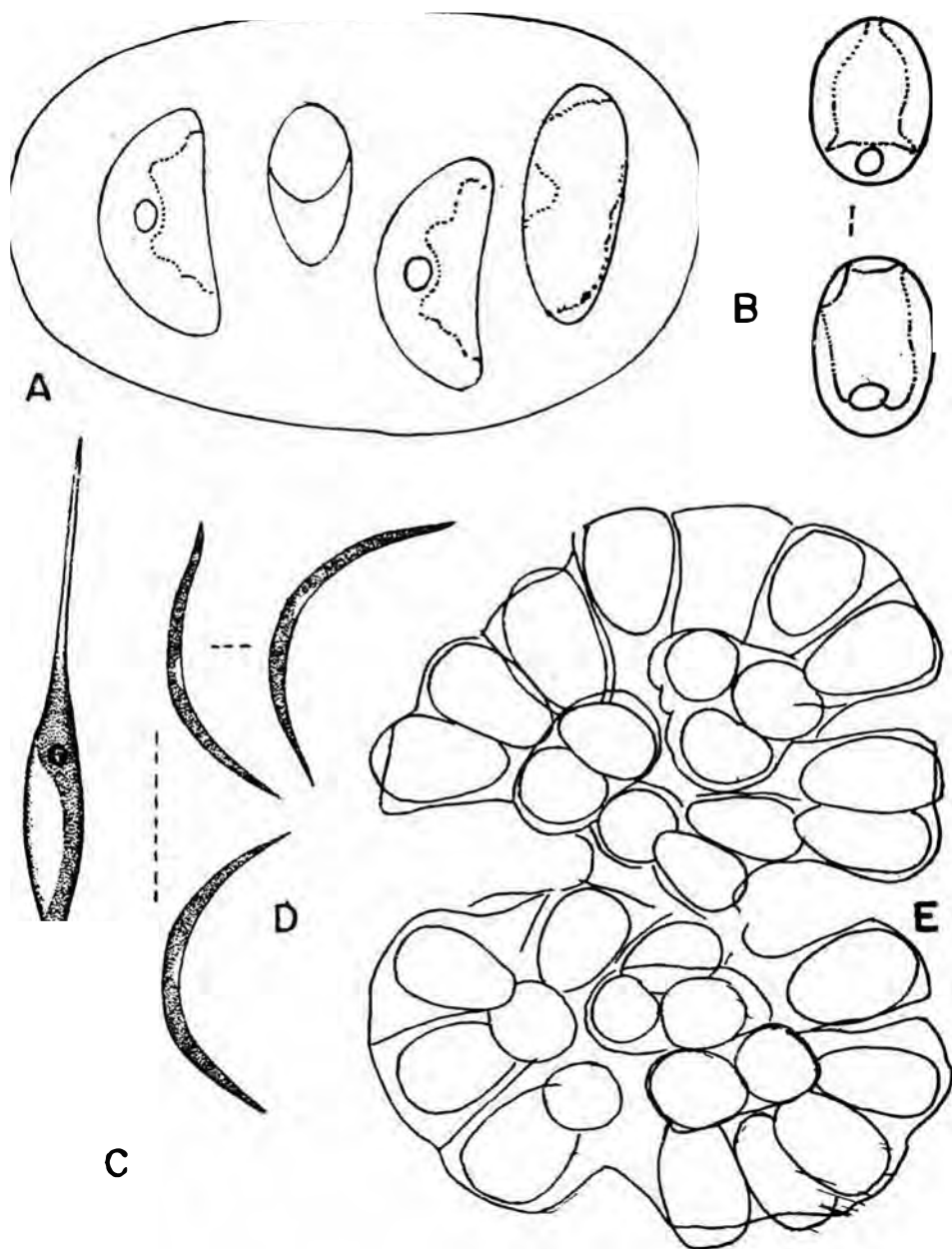


Fig. 18. A. *Nephrocytium schilleri*; B. *Chlorella ellipsoidea*; C. *Schroederia setigera*; D. *Monoraphidium caribeum*; E. *Botryococcus* cf. *braunii*.

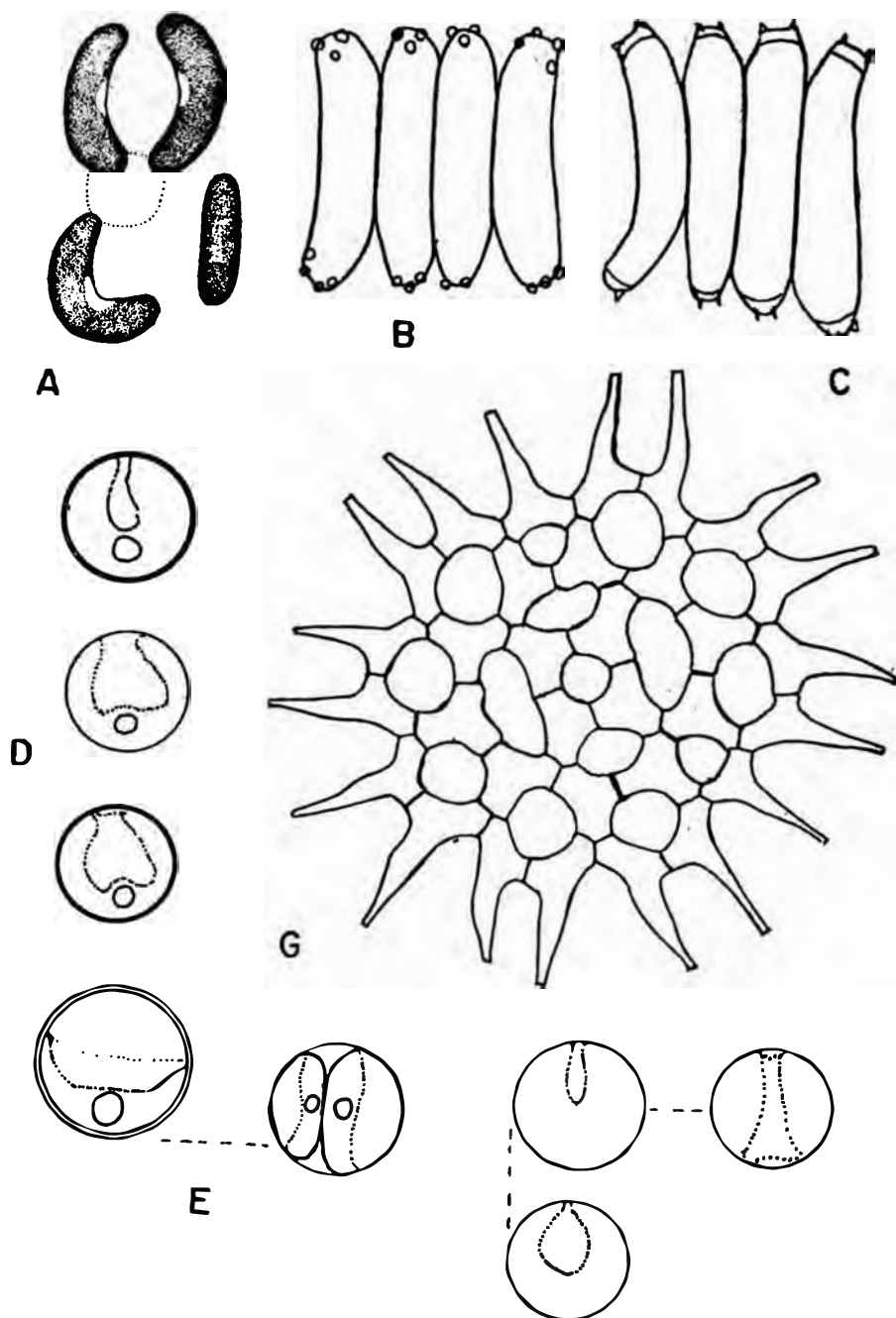


Fig. 19. A. *Monoraphidium* cf. *minutum*; B. *Scenedesmus polyglobulus* fo.; C. *S. lunatus*; D. *Chlorella vulgaris*; E. *C. luteoviridis*; F. *C. minutissima*.

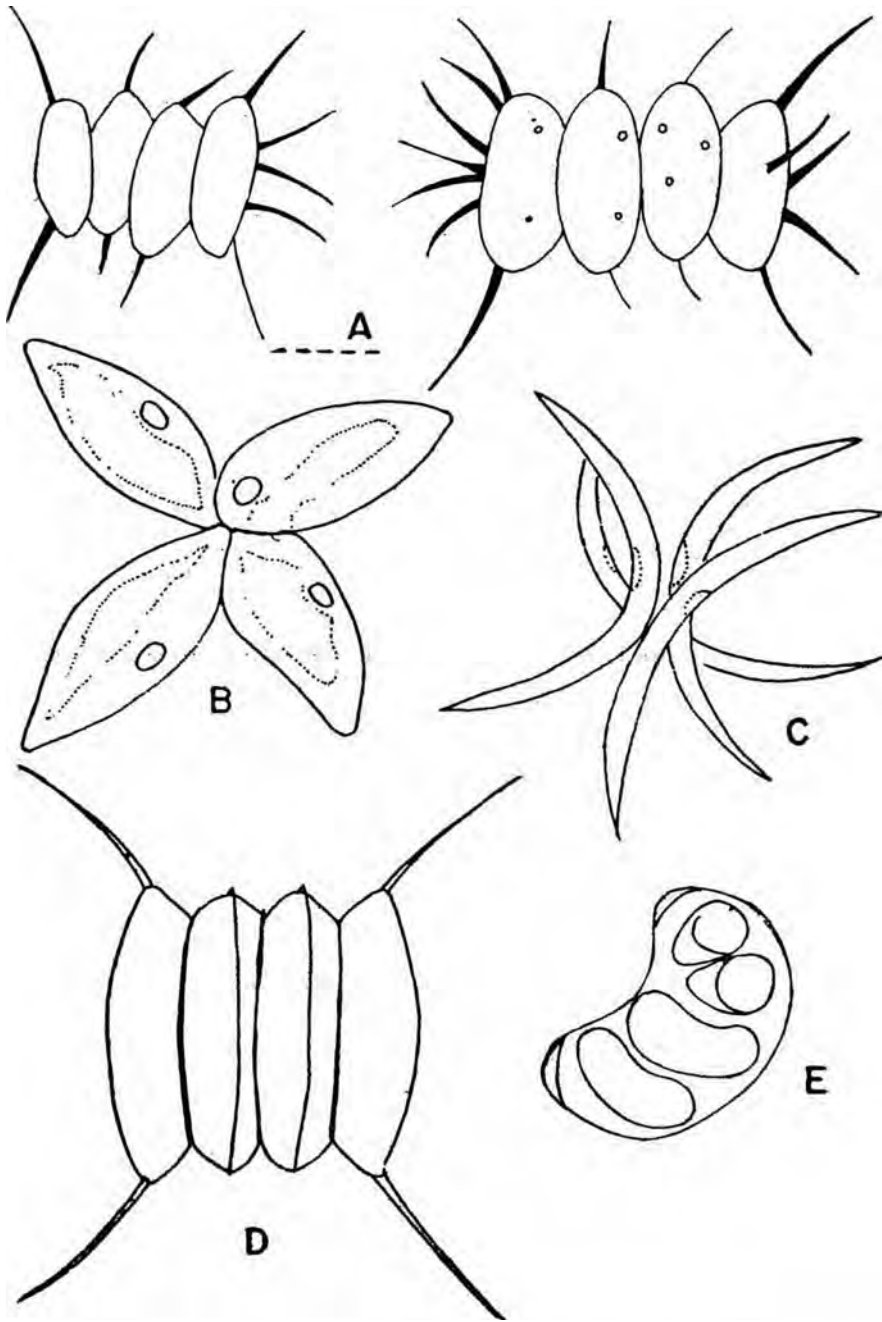


Fig. 20. A. *Scenedesmus spinosus*; B. *Chlorolobion guanense*; C. *Ankistrodesmus gracilis*; D. *Scenedesmus armatus*; E. *Nephrochlamys willeana*.

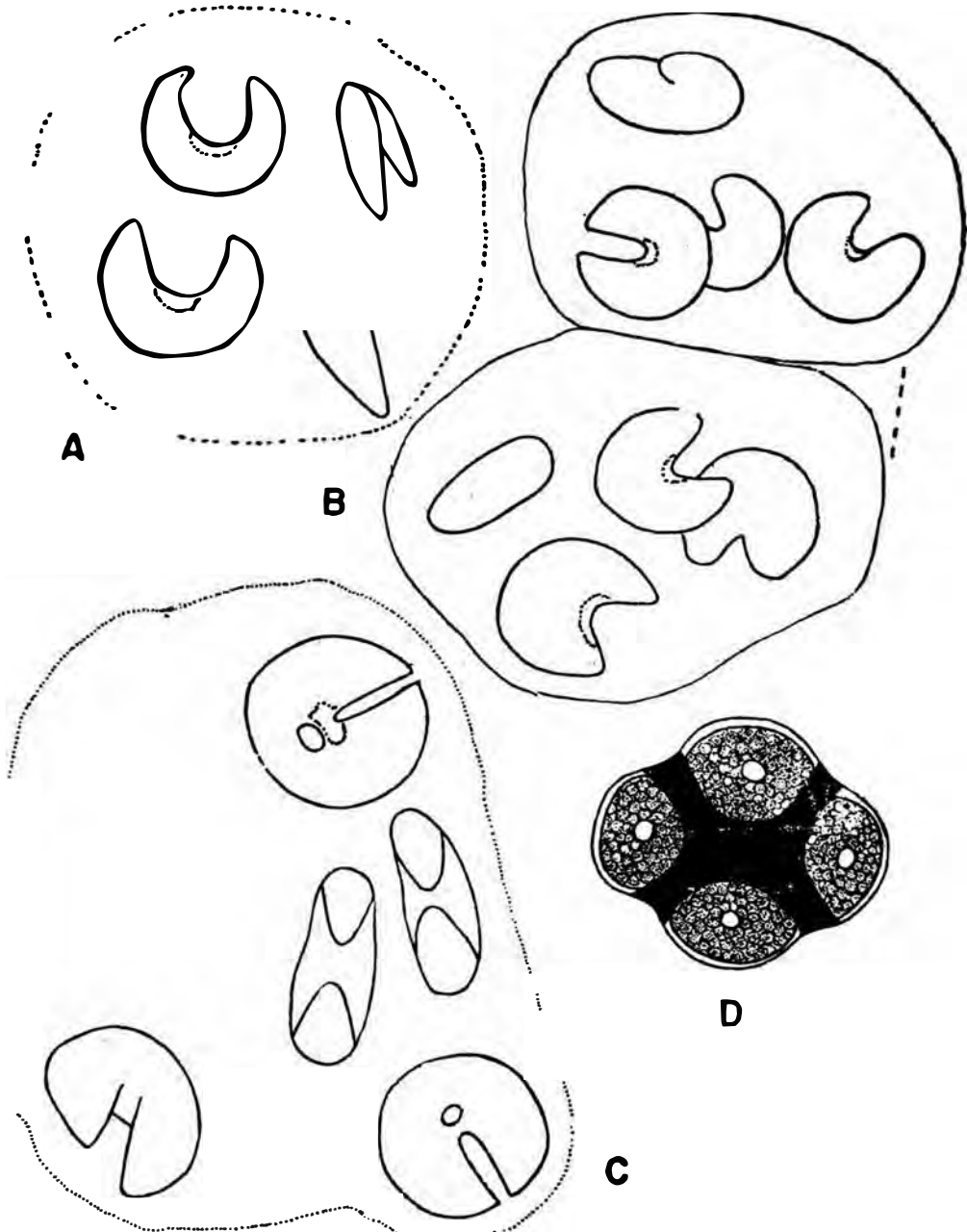


Fig. 21. A. *Kirchneriella irregularis*; B. *K. aperta*; C. *K. obesa*; D. *Gloeotaenium loitlesbergianum*.

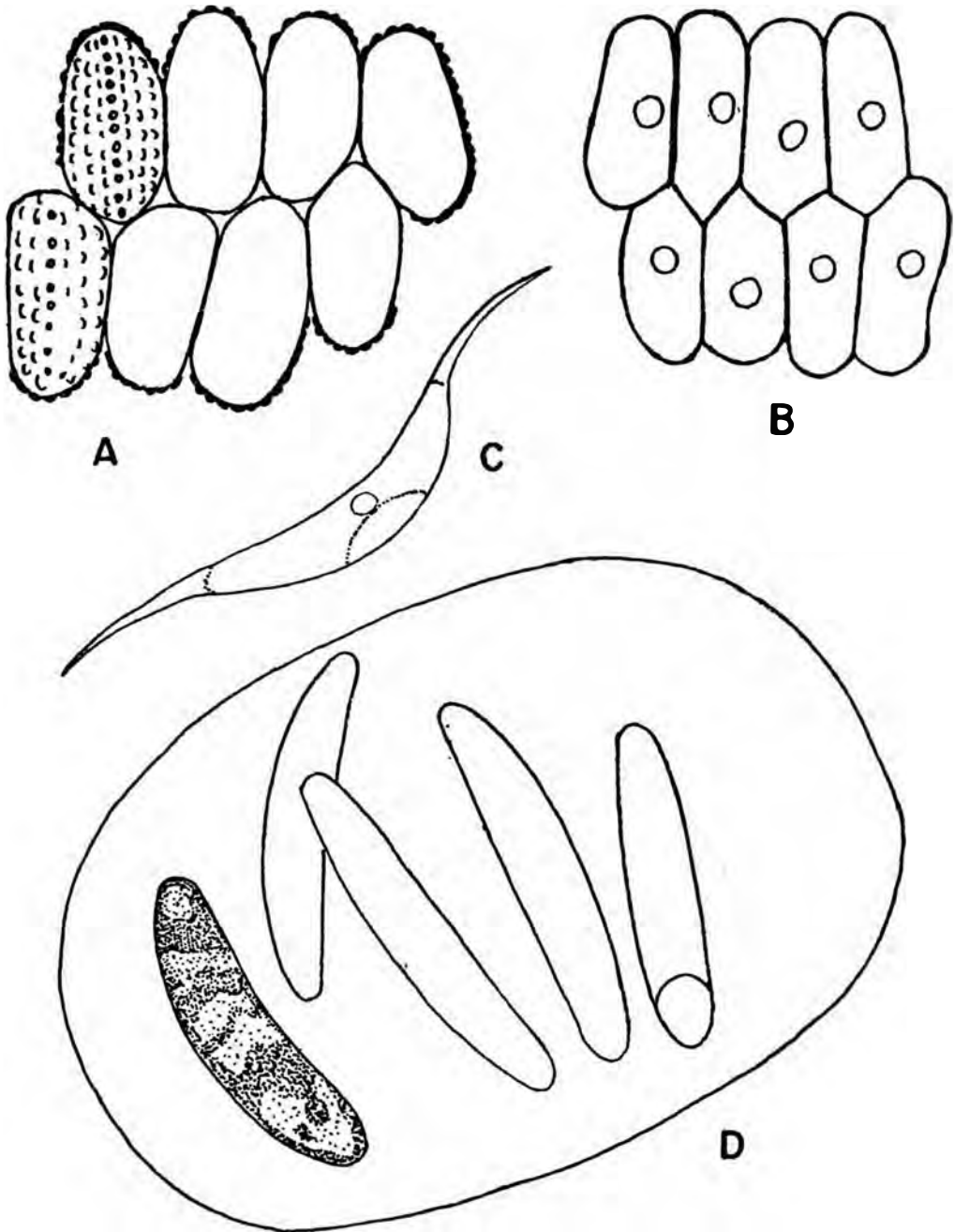


Fig. 22. A. *Scenedesmus verrucosus*; B. *S. disciformis*; C. *Schroederia antillarum*; D. *Nephroclytium allantoideum*.

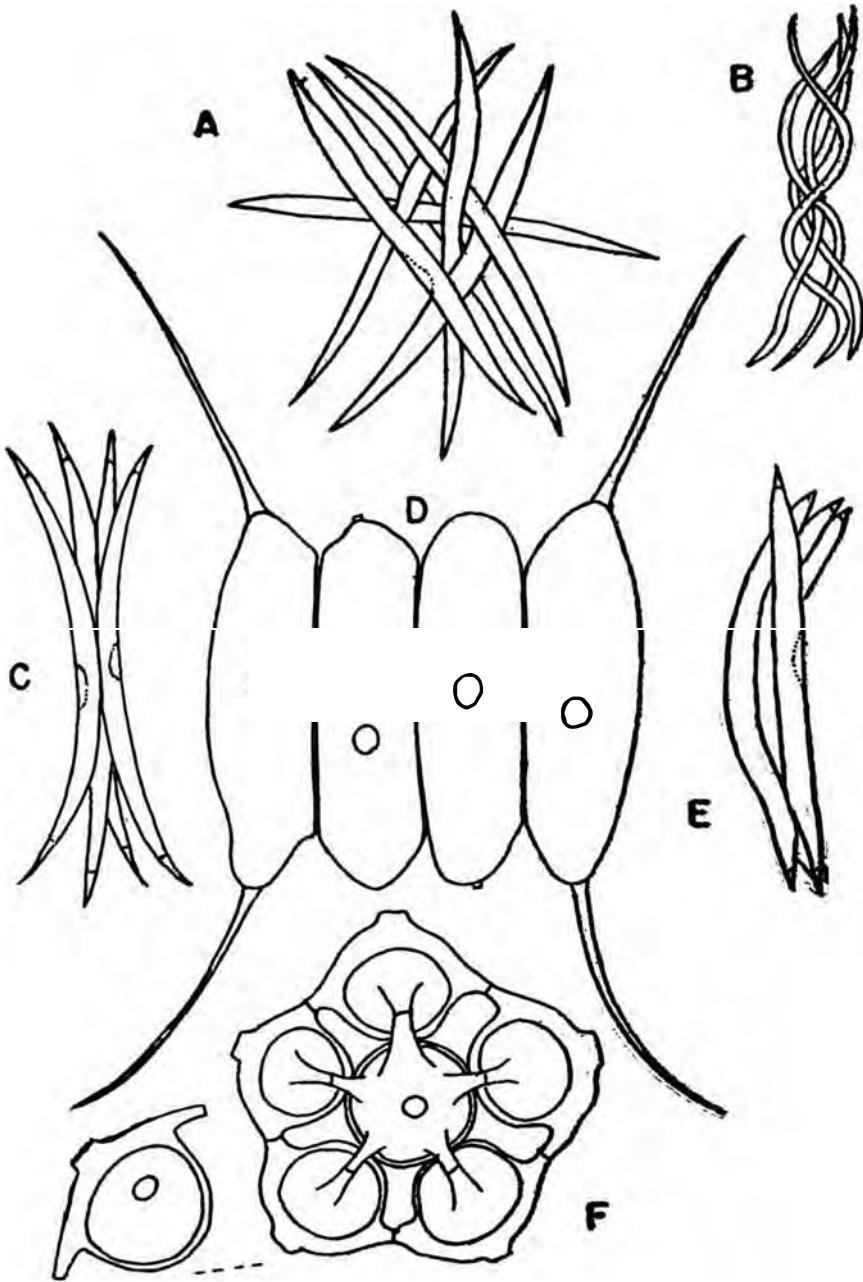


Fig. 23. A. *Ankistrodesmus fusiformis*; B. *A. spiralis*; C. *A. falcatus*; D. *Scenedesmus magnus*; E. *Ankistrodesmus densus*; F. *Coelastrum reticulatum* var. *cubanum*.

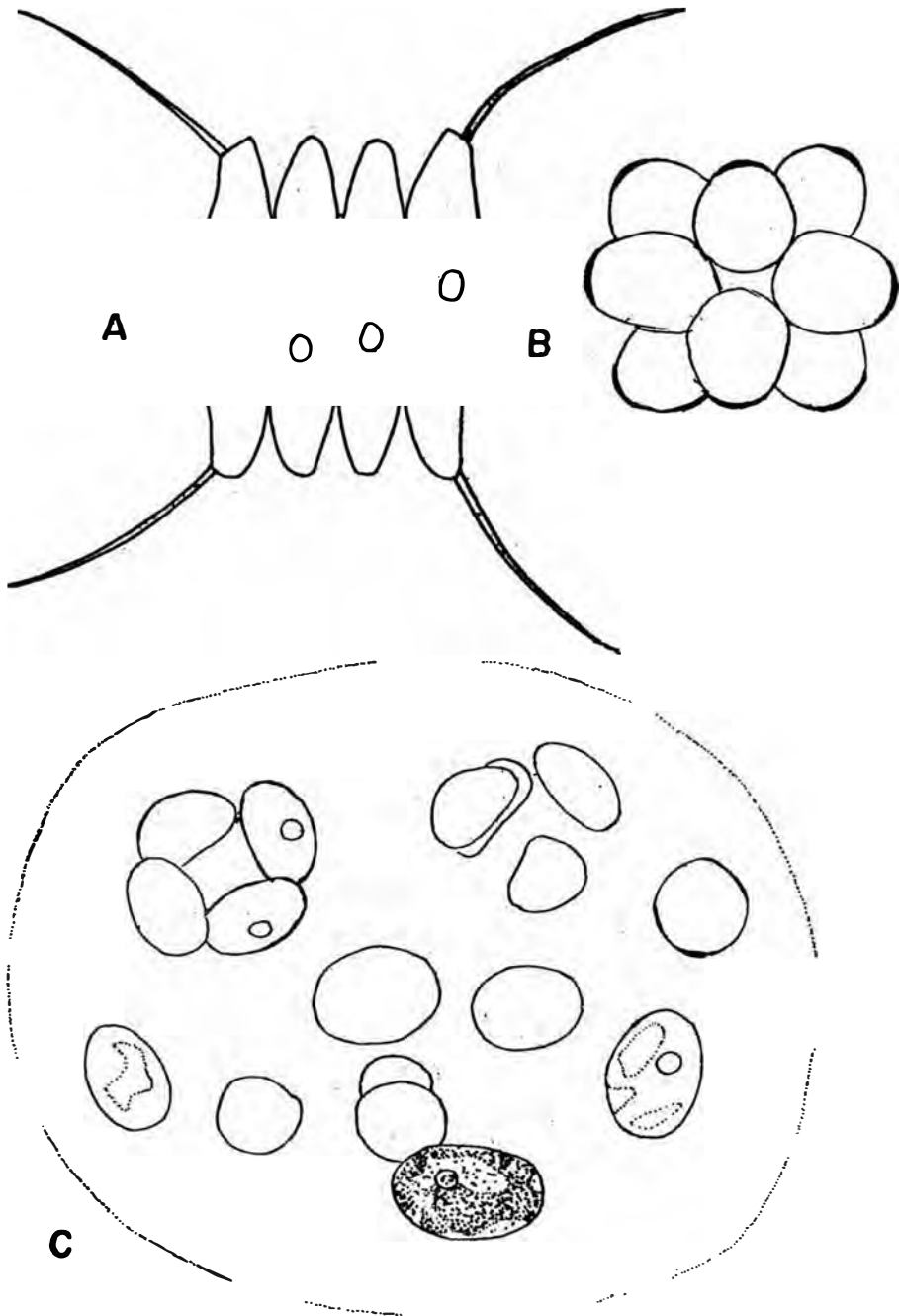


Fig. 24. A. *Scenedesmus opollensis*; B. *Coelastrum astroideum*; C. *Coenocystis* cf. *subcylindrica*.



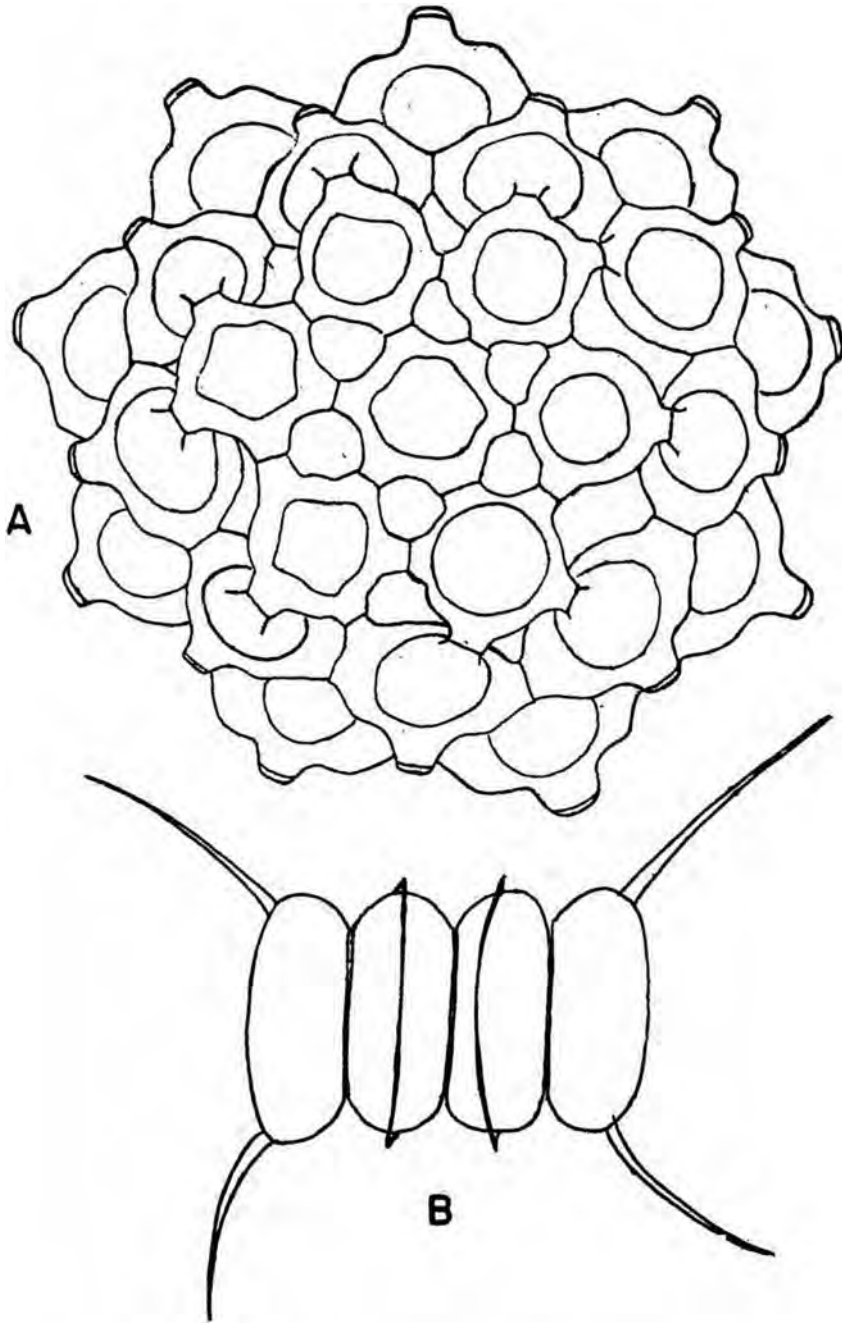


Fig. 25. A. *Coelastrum pulchrum*; B. *Scenedesmus velitaris*.

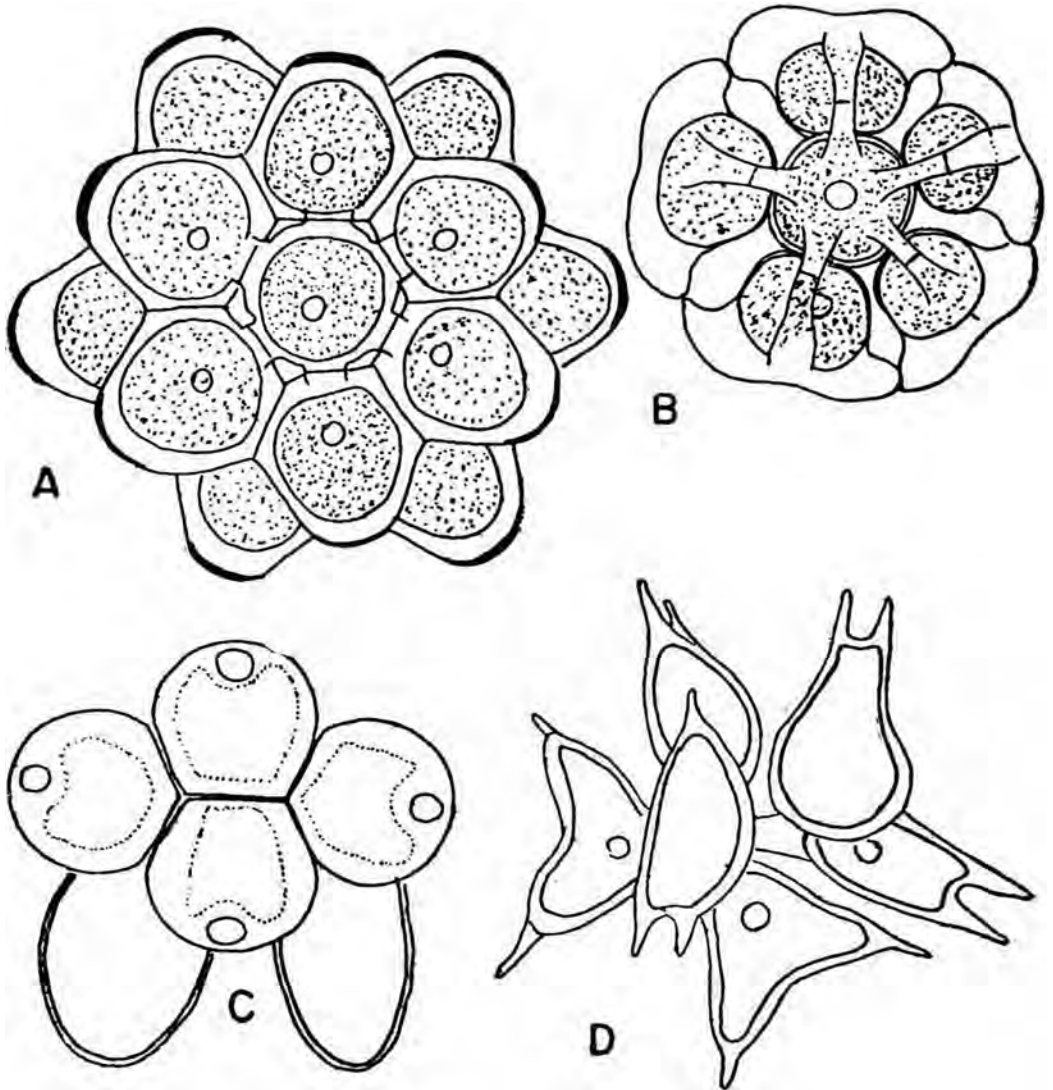


Fig. 26. A. *Coelastrum pseudomicroporum*; B. *C. reticulatum* var. *reticulatum*; C. *Westella botryoides*; D. *Sorastrum spinulosum*.

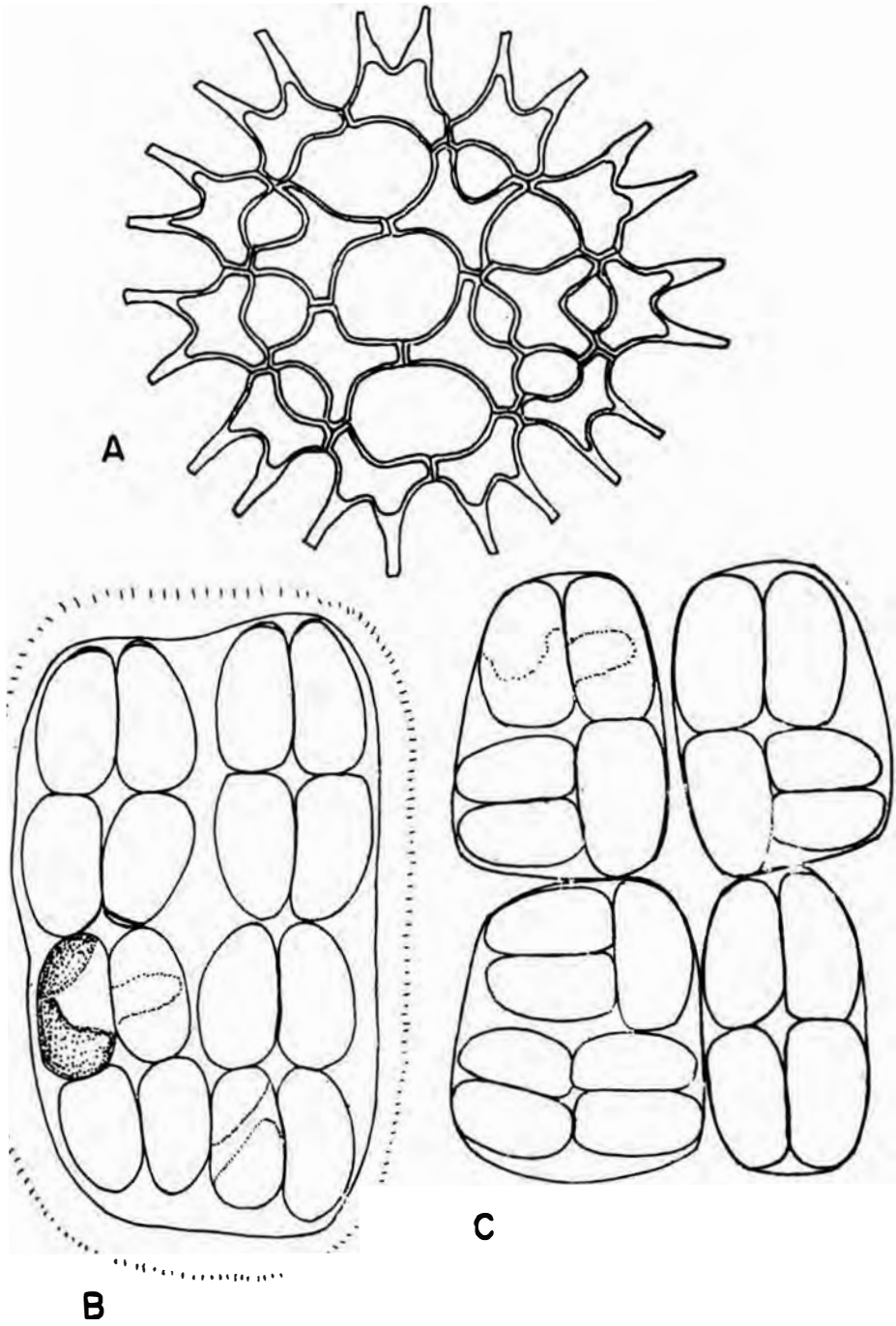


Fig. 27. A. *Pediastrum duplex*; B-C. *Willea komarekii* sp. nov. (B. Iconótipo),

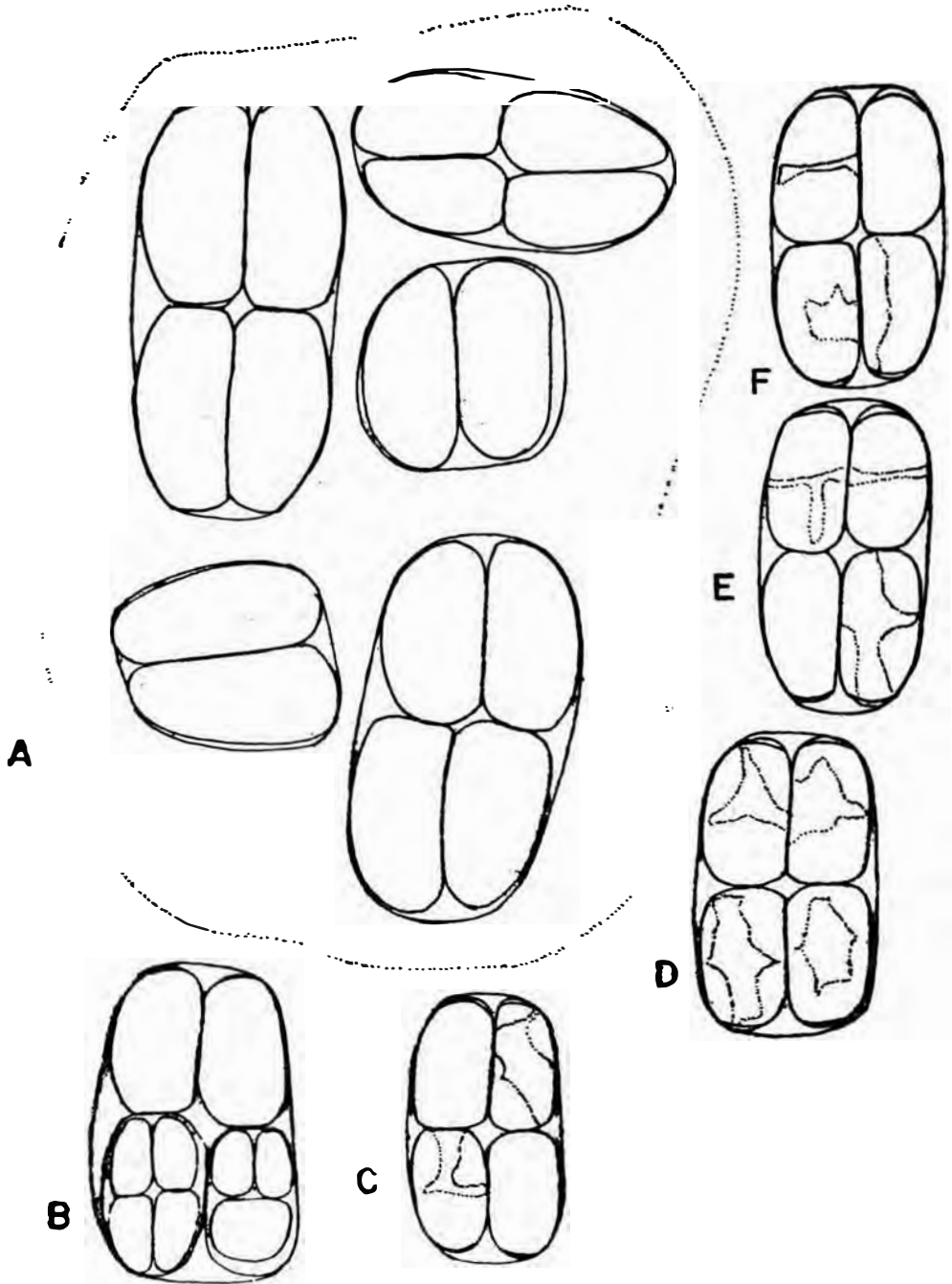


Fig. 28. A-F. *Willea komarekii* sp. nov.

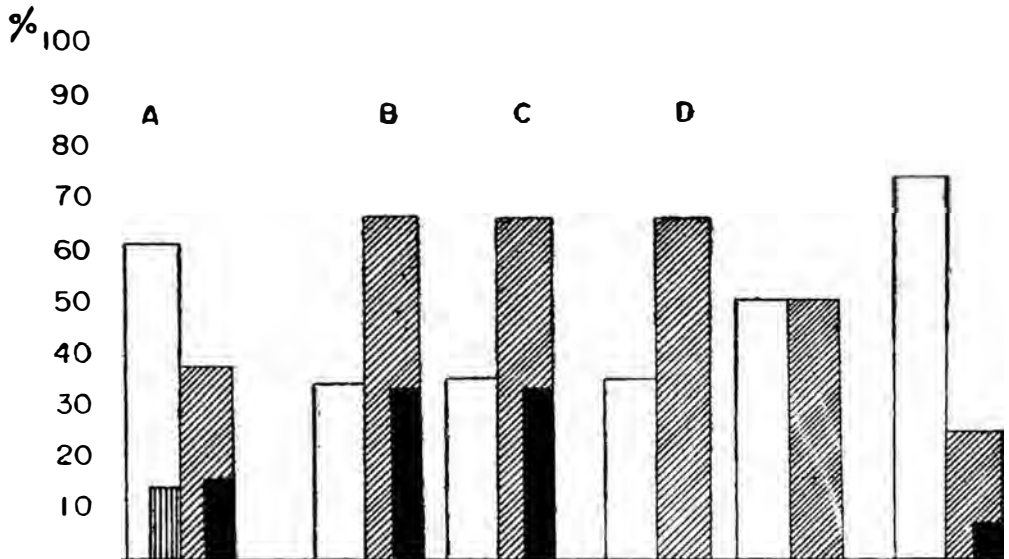


Fig. 29. Comparación de la distribución de las clorococcales y de algunos de sus géneros. A. Clorococcales. B. *Oocystis*. C. *Nephrocytium*. D. *Coelastrum*. E. *Pediastrum*. F. *Scenedesmus*. Identificación de las barras: blancas, cosmopolitas; rayadas verticalmente, cosmopolitas con diferencias morfológicas; rayadas diagonalmente, pantropicales; negras, conocidas sólo para Cuba.